



# **Nevada Transportation Conference**

**April 2009**

**RTC Assistant General  
Manager,  
M.J. Maynard**



Quicker.



Greener.



# The Climate Registry

March 16, 2009

“I am pleased to officially welcome the **Regional Transportation Commission of Southern Nevada** as a Member to The Climate Registry (The Registry).

This is truly an historic moment marking the beginning of a new multi-national organization which allows organizations to voluntarily inventory, verify, and publicly report their greenhouse gas emissions (GHG).

We look forward to working with you to address the impacts of climate change and to find ways to reduce GHG emissions.”





# The Climate Registry

Total Members: 327

Wal-Mart

Shell Oil

Ford

Levi Strauss

Southwest Gas

Johnson & Johnson



Source: The Climate Registry (as of April 1, 2009)



# The Climate Registry

Totals: 10 entities: 4 Members: 4



&

Alameda-Contra Costa Transit District  
Foothill Transit  
Utah Transit



Source: The Climate Registry (as of April 1, 2009)

## CRIS: Climate Registry Information System

“CRIS is a voluntary reporting registry...to calculate and publicly report ...Greenhouse Gases (GHGs).”



Home • [Public Reports](#) • [Reference Documents](#) • [Demo](#) • [The Climate Registry](#)

Welcome to the Climate Registry Information System

Columbia are the founders of the organization.

### About the System

CRIS is a voluntary reporting registry that allows worldwide organizations to calculate and publicly report all six internationally-recognized Kyoto Greenhouse Gases (GHGs). It is designed to support complete, transparent and accurate reporting of your organization's GHG emissions inventory, and to reduce the reporting burden for organizations by providing a unified GHG registry.

**User ID \***

**Password \***

[Login](#)

[Register to use CRIS](#)

[Forgot your user ID or password?](#)

[Contact Us](#)

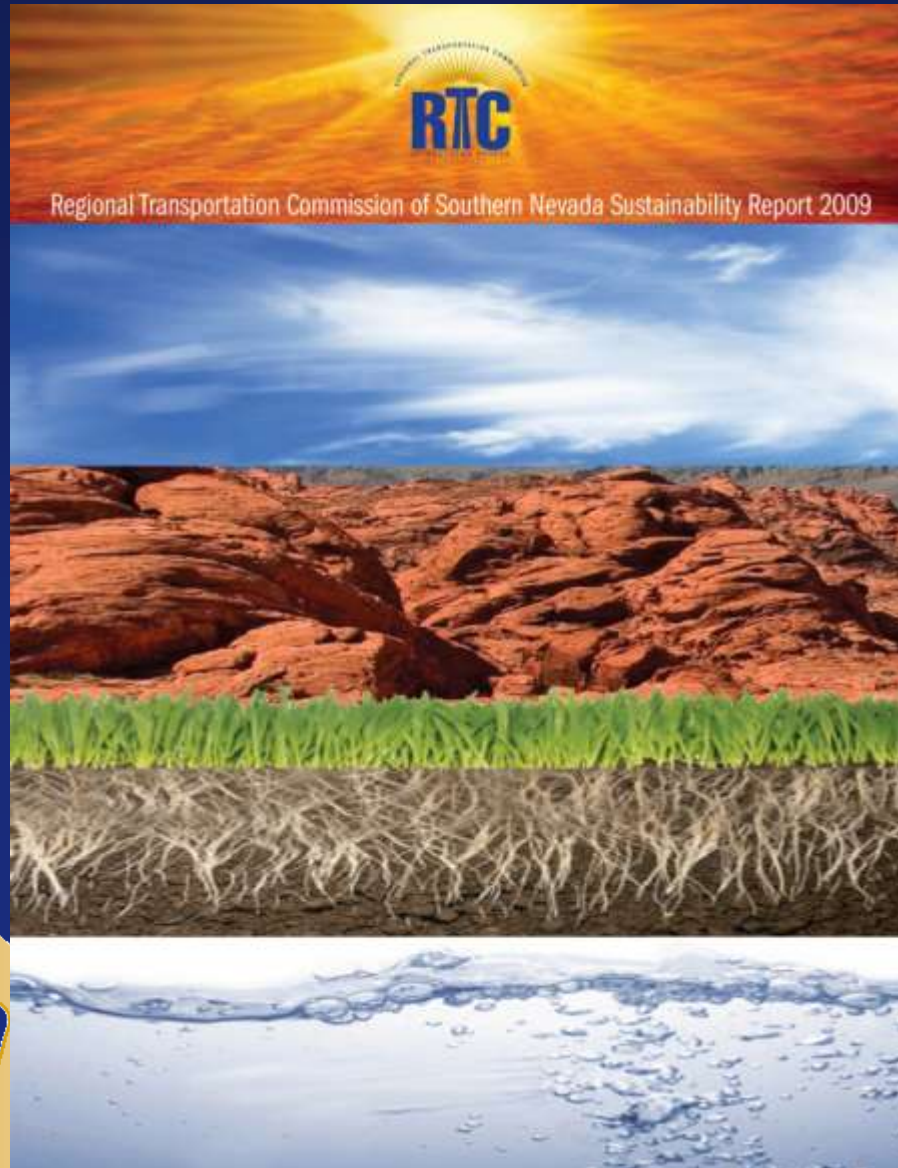
**Who can register to use CRIS?**

Any legal entity recognized under U.S., Canadian, or Mexican law may apply.

 **Public Reports**  
Download public Entity reports or

 **Reference Documents**  
View The Climate Registry

# RTC Sustainability Report



# RTC Transit

**250,000**

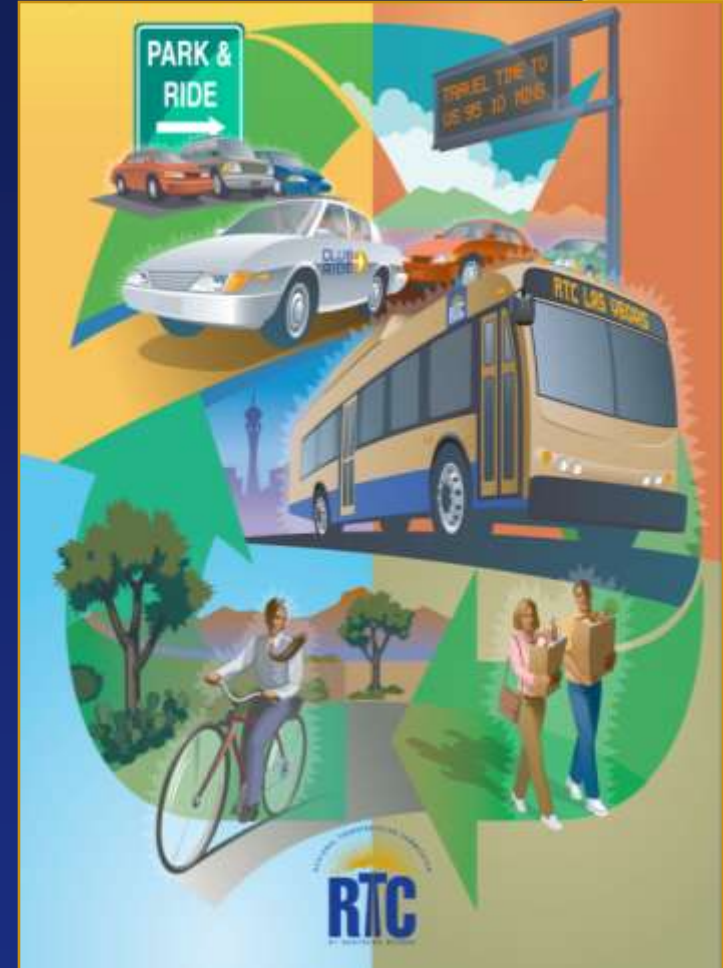
Number of transit riders on each vehicle per year

**55,000**

Number of bicycles carried on the front of RTC transit vehicles per month

**400**

Number of vehicles added to the fleet since service started in 1990



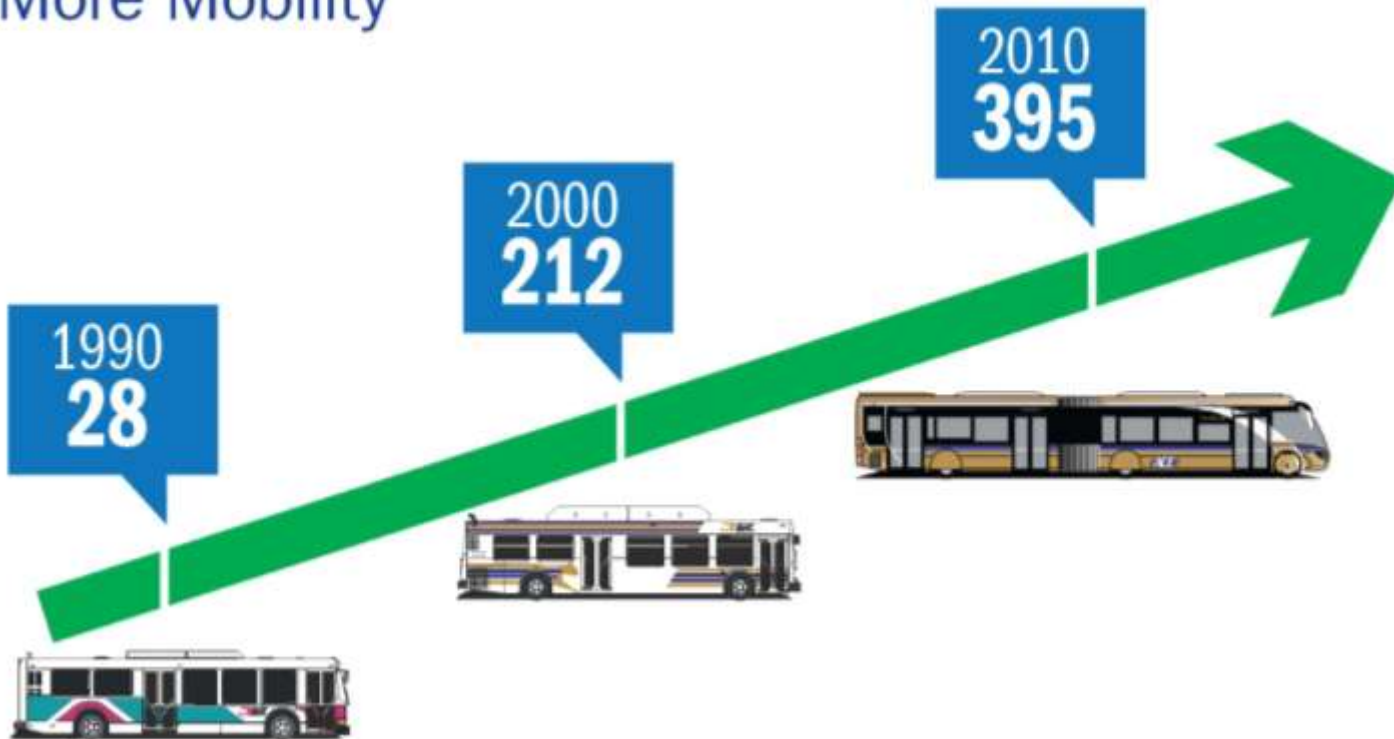
January 2009 Transit Guide





# RTC Transit

Fleet Growth: More Service =  
More Mobility



# RTC Transit

Fleet Growth: More Service =  
Better Fuel Economy



**900 Series  
Hybrid Buses**  
4.3 Miles  
per Gallon



**500 Series  
Diesel Buses**  
2.2 Miles  
per Gallon

# 112 Cars



# 112 Drivers



# 112 Riders



# 112 Riders in a Rapid Transit Vehicle

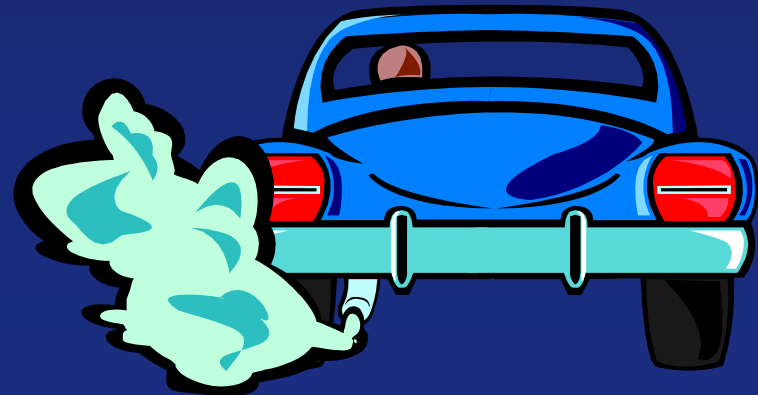


# 112 People



# Trips on Transit: Removing Cars Reducing Emissions

Daily Car Trip Reductions	190,000
Vehicle Mile Trips (VMT) Saved	1.1 Million
Daily Greenhouse Gases Reduced	10.5 Tons





# Trips on Transit: Bicycles on Buses Reducing Emissions



In 2008:

**692,067**

Bicycle on Fixed  
Route Trips

**100**

Tons of Green  
House Gases  
Reduced

# RTC Transit

## Sustainable Fleet Operations



Wright Streetcar with Hybrid Propulsion

### Diesel/Electric Hybrid Vehicles:

- 30% less green house gases
- 22% Better fuel economy than diesel



New Flyer CNG

### Compressed Natural Gas (CNG)

- 52 CNG vehicles in the 2009 fixed route fleet
- CNG vehicles emit 97% less particulate matter than diesel



"The Deuce"

### High Capacity

- The Deuce carries **90 passengers**, more than any other vehicle in the fleet

# RTC Transit Modern Shelters





Durango & 95  
Park and Ride



Central City  
Terminal



110 mins.



20 mins



# Metropolitan Planning Organization (MPO) Central City Terminal (CCT)



- Part of City of Las Vegas Centennial plan

# Metropolitan Planning Organization (MPO) Central City Terminal (CCT)

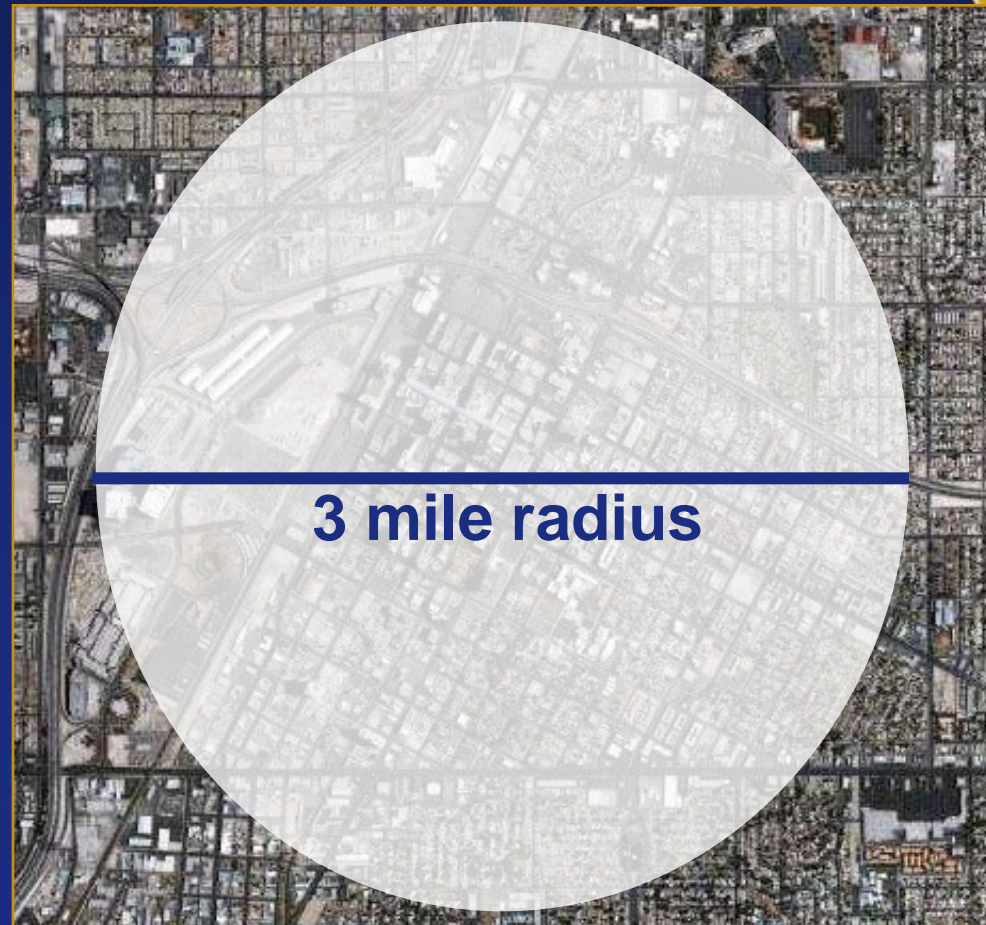
- L.E.E.D. Certified
- Bicycle Station
- Solar Energy
- Energy Efficient Cooling System



# Metropolitan Planning Organization (MPO)

## Electric Bicycle Share Program

- 5,000 Employees in 38 nearby buildings
- Average Trip less than 3 miles
- Electric Bicycles for faster trips



# RTC Facilities

## How many washes?

380 Vehicles washed 187 times  
(annually)

## How much water used?

300 gallons to wash one bus\*  
21.3 million gallons annually

## How much water saved?

250 gallons per wash is **reclaimed**  
17.7 million gallons **reclaimed** annually

\*Based on washing one 40-foot bus



# RTC I.T. Department

## Equipment Purchases & RoHS

- Restriction of Hazardous Substances (RoHS) in electronic equipment
- RTC RoHS Compliancy: 25%



## Virtualization Project

- Condense server from 70 to 6 physical boxes
- Less power consumption (cooling and run time)





Club Ride

## 2008 Success Stories

### Commute Days Reported

#### Car Pooling

2007	255,251
2008	<b>320,079</b>





**Club Ride**

**2008 Success Stories**  
**Commute Days Reported**



**13,220** Cycling



**62,544** Transit





Club Ride

## Success Stories

Approximately **200**  
Business Partners

Cashman CAT

Blue Man Group

Mandalay Bay



# Communications & Marketing

## RTC Viva Bike Vegas



# Communications & Marketing

## One Day a Month Campaign

One day we'll make a difference.

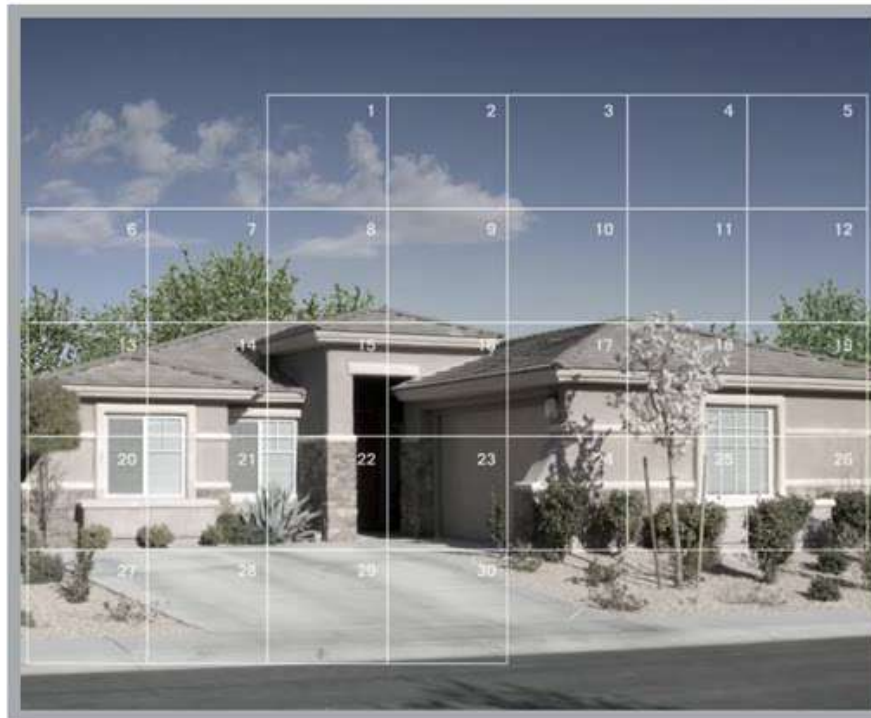


**1DAY**  
*a month*

**One day a month.** If every commuter—one day this month—took alternate transportation, we could remove nearly 200 tons of pollution from our air. We could take almost a million car trips off our roads. We could breathe easier, and get there faster. And then one day, we could see miraculous changes in our valley.

# Communications & Marketing

## One Day a Month Campaign



# Communications & Marketing

## Grease Bus / Earth Day

Winning design will be featured on a RTC transit vehicle





REGIONAL TRANSPORTATION COMMISSION

RTC

OF SOUTHERN NEVADA